



**HUIJUE GROUP**  
ENERGY CREATES A BETTER LIFE



[www.hj-ess.com](http://www.hj-ess.com)

# Solar Street Light 500w

## High Quality Solar Panels

Fast energy storage, 20% higher photoelectric conversion rate, and with a built-in lithium battery, it only takes 6-8 hours to fully charge.

## High Brightness Solar Light

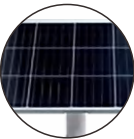
This street light has high-brightness energy-saving LED beads, suitable for outdoor places such as courtyards, gardens, patios, parking lots, etc.

## Easy To Installation

The solar street light is easy to install, and can be mounted on a wall or a pole, it can saving installation costs and maintenance costs, electricity bills as well.



PRODUCT DETAILS



1



**Solar Panel**  
High quality polycrystalline silicon material, high charging efficiency, long lifespan.



2



**LED Chip**  
Moisture-proof and waterproof, high quality LED chip has a wide lighting range.



3



**Battery**  
Long battery lifespan and more durable, even use in the -20°C~65°C area.



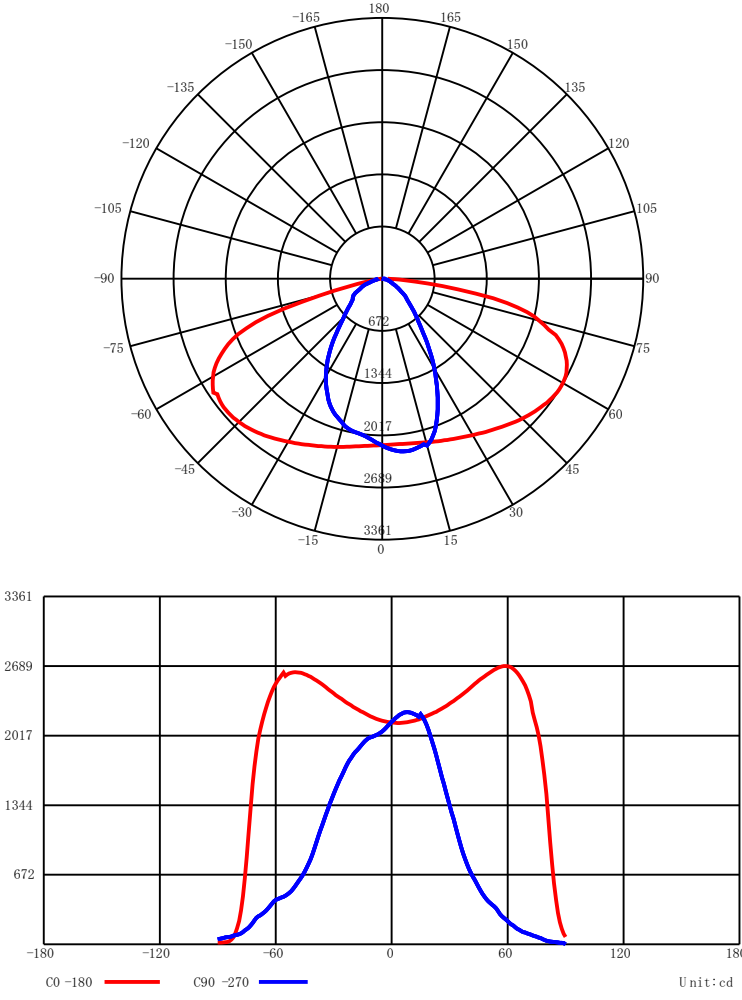
4



**Iron Material**  
Stable and strong, waterproof and rustproof.

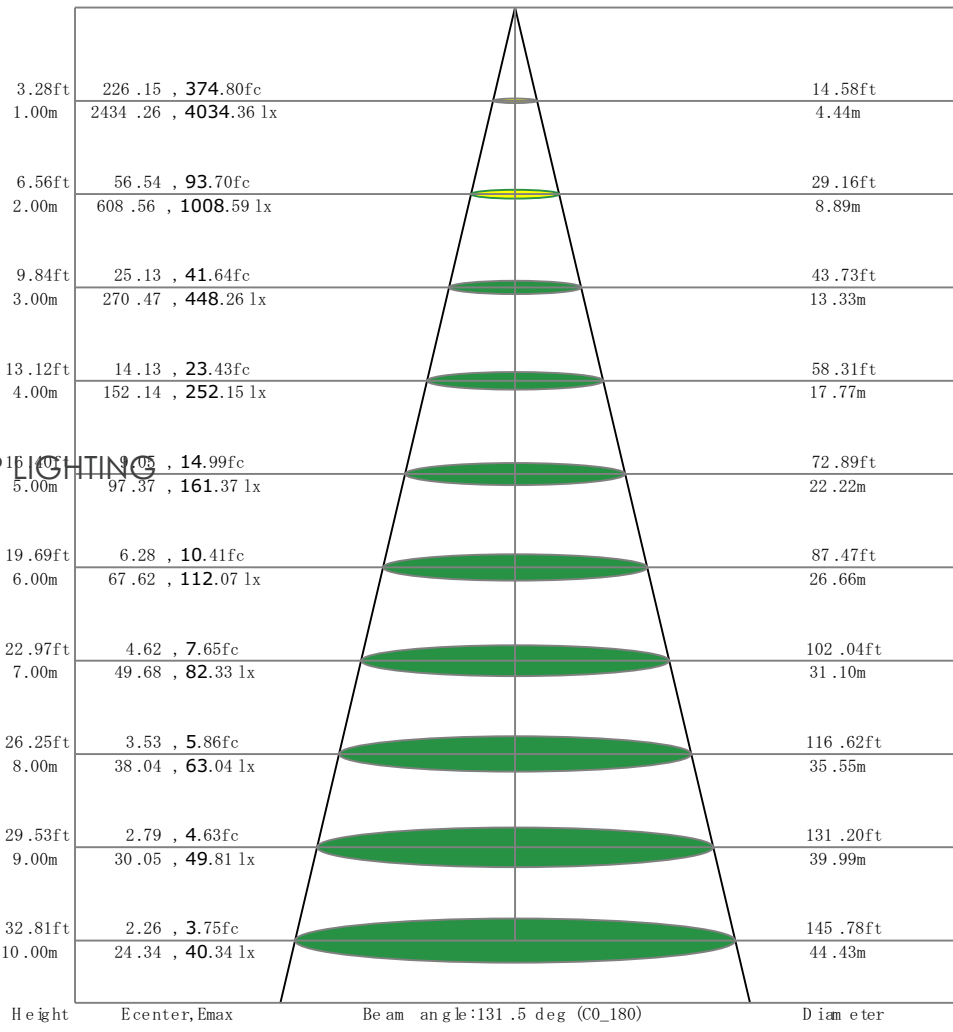


**LUMINOUS INTENSITY DISTRIBUTION CURVE**

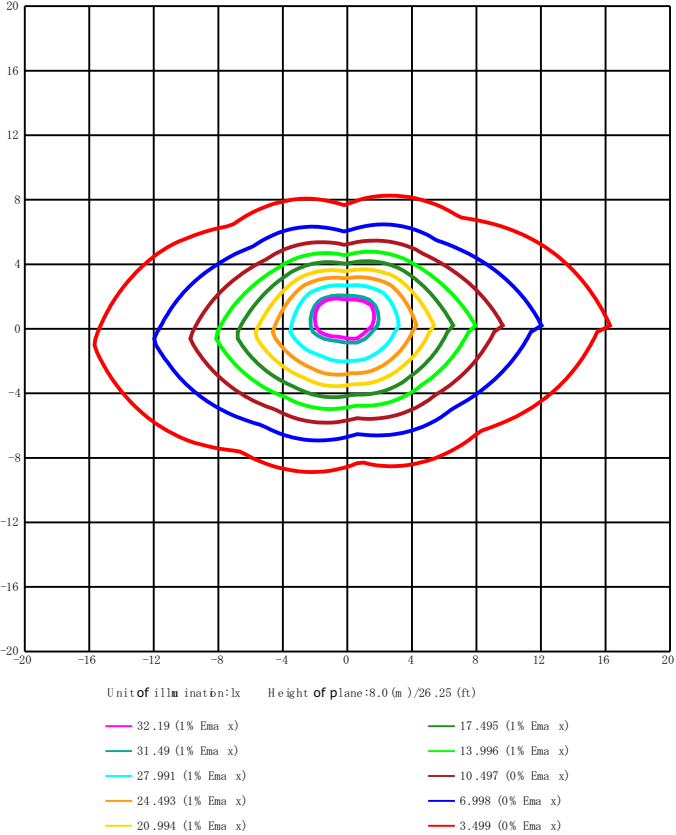
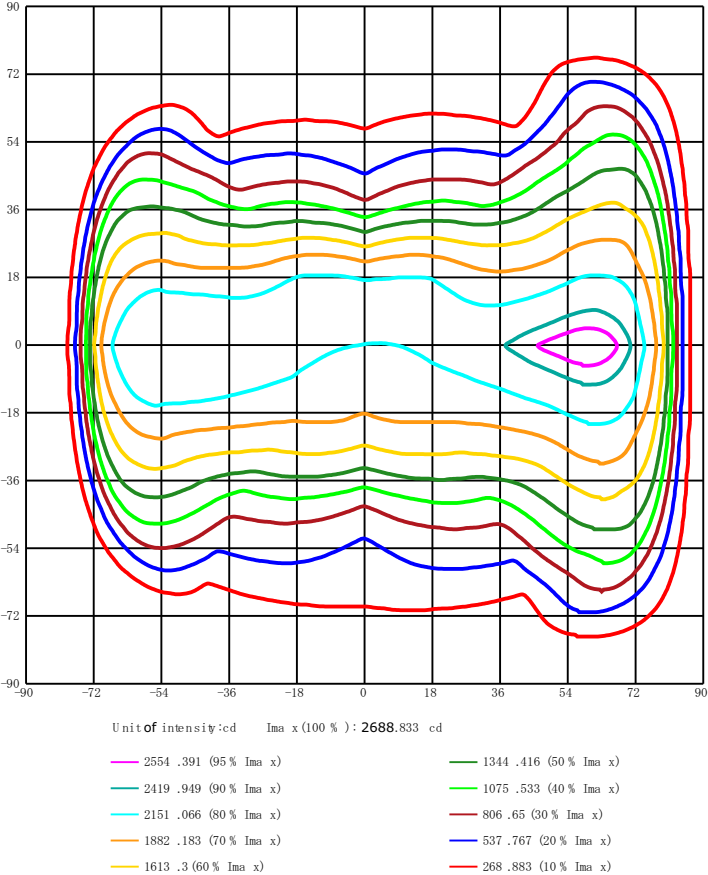


**LX-DISTANCE DIAGRAM**

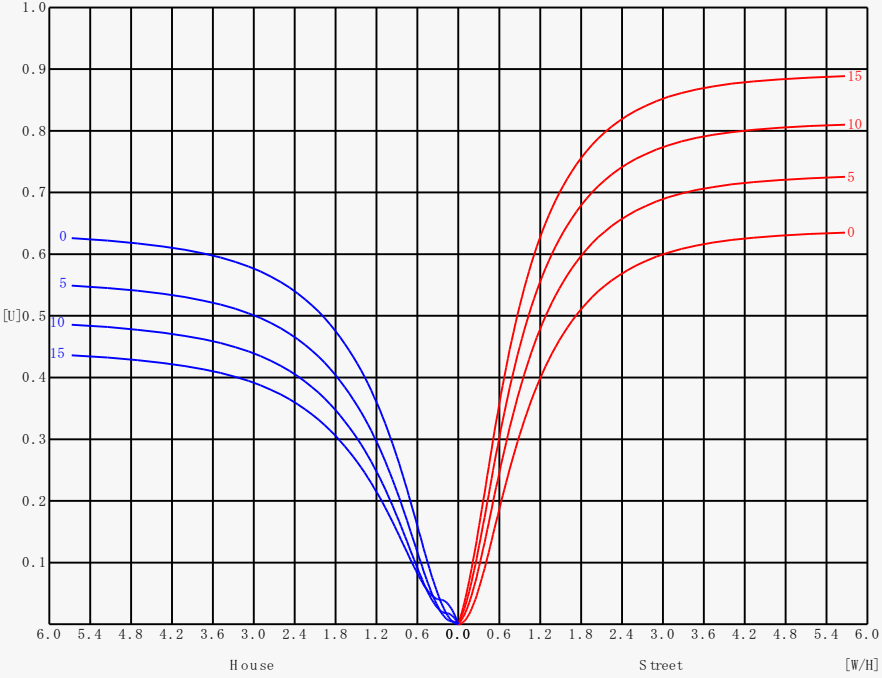
ALLTOP LIGHTING



### ISOCANDELA DIAGRAM



### UTILIZATION FACTOR DIAGRAM (ROAD)



**BATTERY SPECIFICATION**



DesignLife	6-8 years
Nominal Voltage	3.2V
Nominal Capacity	30AH
Self-Discharge	
3% of capacity declined per month at 20°C (average)	
Operation Temperature Range	
Discharge	-20~60°C
Charge	-10~60°C
Storage	-20~60°C
Max.Discharge Current 77°F(25°C)	1200A(5s)
Short Circuit Current	3000A

**BATTERY GUARANTEE OF QUALITY**

**1 Battery Cells**  
High-end battery cells keep every cell's voltage, resistance, capacity, discharging always in sync.

**3 Precision Welding Machine**  
Fully automatic precision welding machine can ensure that every battery can be welded firmly to prevent the danger of short circuit or power failure.

**2 Aging Test Machine**  
every battery pack need to thorough charging and discharging test by the aging test machine to keep 100% qualified.

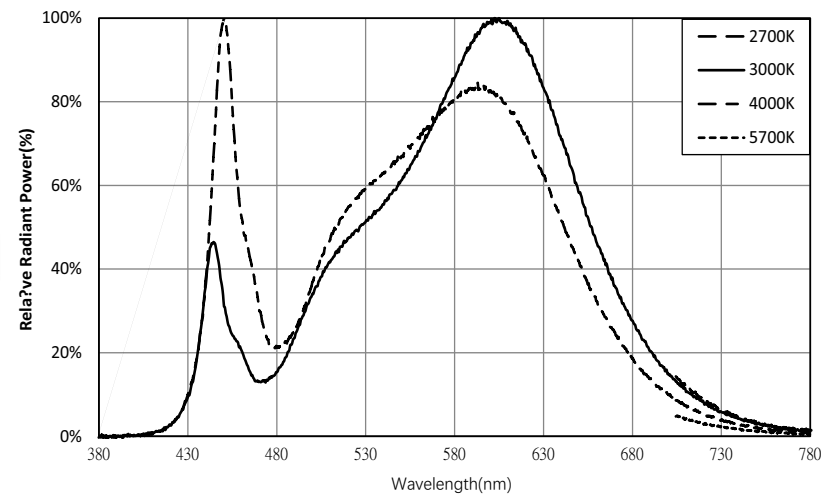
**4 Battery Protector**  
High precision IC keep performance more stable protect over load, over charge, over discharge, short circuit, over voltage, over current keep battery pack always safe and long life span.

## INTRODUCTION SMD 3030

The Bridge lux SMD 3030 offers exceptional performance in a compact LED package. This high power LED is hot-color targeted which ensures that the LEDs fall within their specified color bin at the typical application conditions of 85° C. With its broad lumen coverage and wide range of CCT and CRI options, the SMD 3030 provides unparalleled design-in flexibility for indoor and outdoor lighting applications. Its high flux capability reduces the number of LEDs and enables industry leading system level lumen per dollar. The SMD 3030 is ideal as a drop in replacement for emitters with an industry standard 3.0mm x 3.0mm footprint.

## Typical Color Spectrum

3030 LED Chip



### Benefits

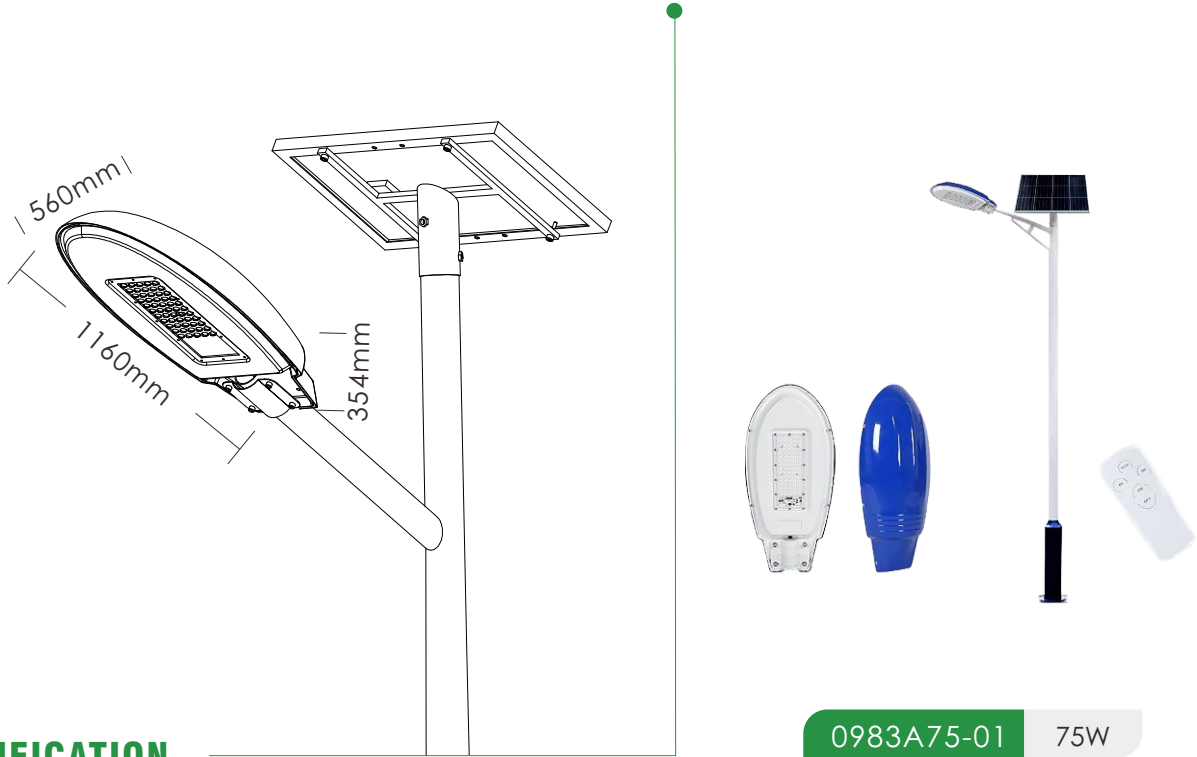
- Lower operating and manufacturing cost
- Ease of design and rapid go-to-market
- Uniform consistent white light
- Reliable and constant white point
- Environmentally friendly, complies with standards
- Design exibility

### Features

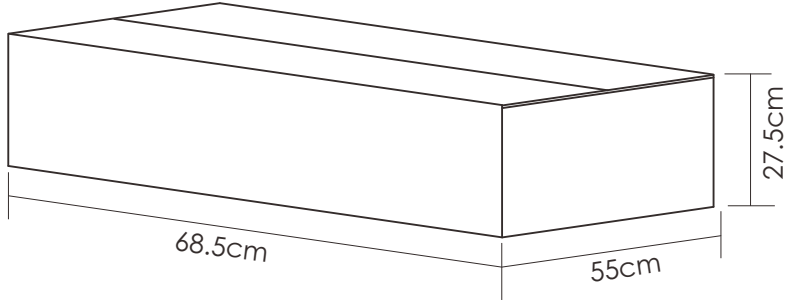
- Industry-standard 3030 footprint
- Excellent color maintenance
- 9 bin color control enables tight color control
- Superior luminous ux at maximum current for reduced LED count
- Hot-color targeting ensures that color is within the ANSI bin at the typical application conditions of 85°C
- Multiple CCT and CRI congurations for a wide range of lighting applications

**PRODUCT SPECIFICATION**

Model	0983A75-01
LED Lamp	3030 LED 75PCS 6000K
Solar Panel	5V 40W, Polycrystalline
Battery Type	LiFePO4 3.2V 30AH
Charging Time	6-8 hours
Discharging Time	30-36 hours
Led	160 lm/w
Material	Iron
Product Size	1160*560*354mm
Install Height	6-8m
Warranty	3 Years



**PACKAGING SPECIFICATION**



P/N	Power	Packing Size (CM)			PCS/CTN	CBM/CTN	G.W/CTN (KGS)
		L	W	H			
0983A75-01	500W	68.50	55.00	27.50	1	0.1036	8.00

## INSTALLATION GUIDE



### Warning:

- ▶ Please avoid looking directly at the light.
- ▶ Dismantling process must be carried out in a safe place.
- ▶ Do not short-circuit, disassemble ; do not put in the water and near the fire.
- ▶ Without the guidance of experts, users are forbidden to repair or dismantle the lights: The supplier shall not be responsible for any consequences owing to incorrect operation or wrong maintained by users.

